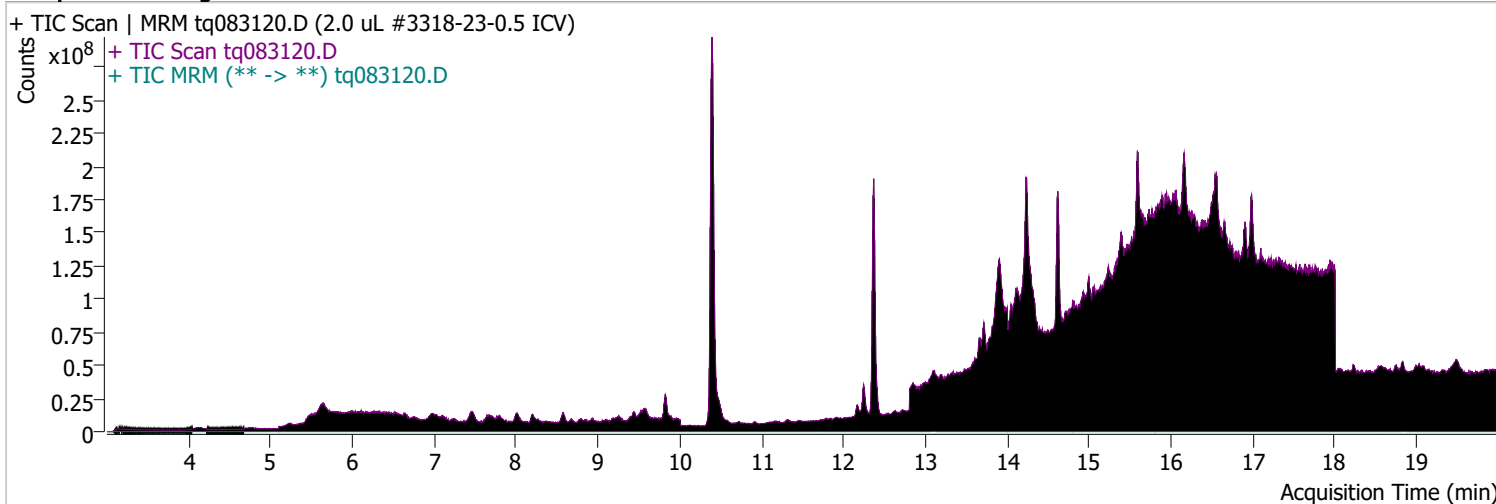


Quantitative Analysis Sample Report

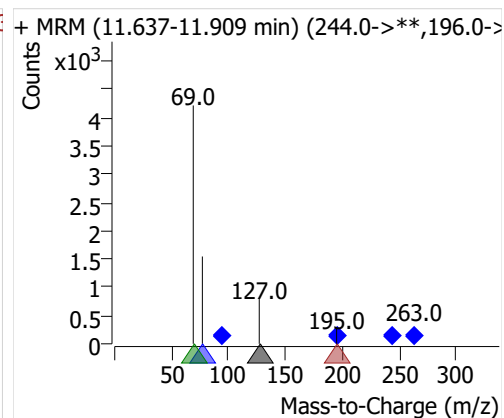
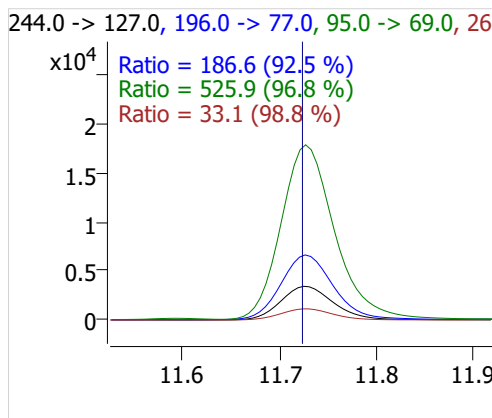
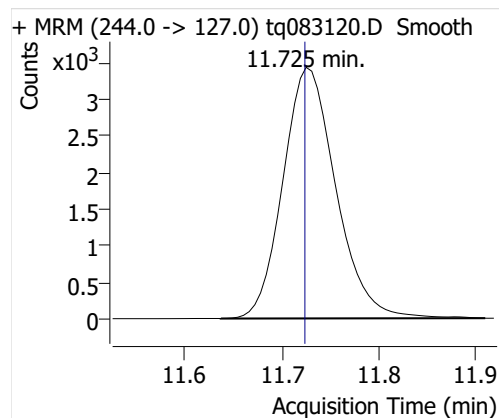
Batch Path	D:\MassHunter\GCMS\1\data\31aug22a\QuantResults\31aug22.batch.bin		
Analysis Time	9/6/2022 9:11 AM	Analyst Name	DESKTOP-R0LAL7E\analyst
Report Time	9/6/2022 11:53:21 AM	Reporter Name	DESKTOP-R0LAL7E\analyst
Last Calib Update	9/6/2022 9:11 AM	Batch State	Processed
Quant Batch Version	10.1	Quant Report Version	10.1
Acq. Time	9/1/2022 10:27 AM	Data File	tq083120.D
Sample Type	QC	Sample Name	2.0 uL #3318-23-0.5 ICV
Dilution	1	Acq. Method	tq22m0831

Sample Chromatogram

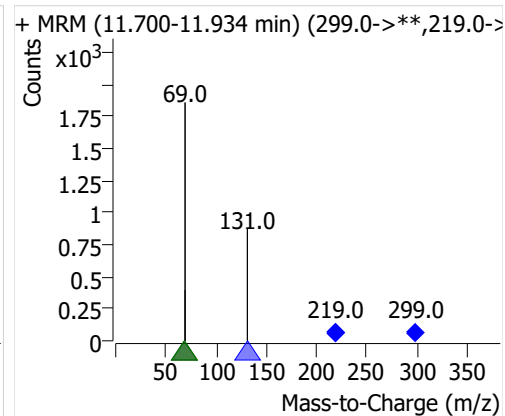
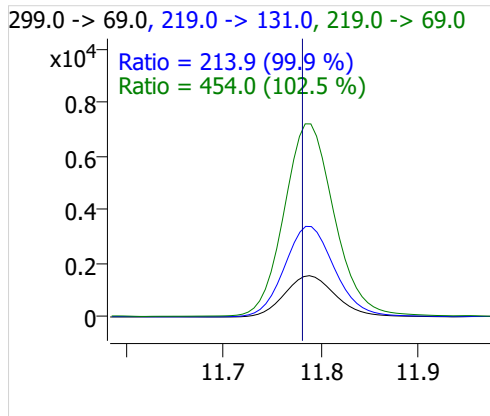
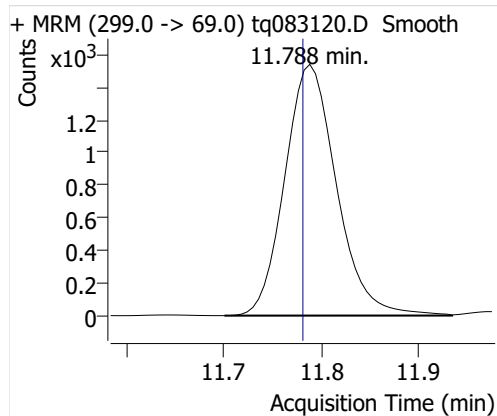


Compound	ISTD	RT	Resp.	ISTD Resp.	Resp. Ratio	Final Conc	Units
4:2 FTOH	6:2 FTOH-C13	11.725	13007	33551	0.3877	0.9318	ng
5:2sFTOH	6:2 FTOH-C13	11.788	5691	33551	0.1696	0.9616	ng
7:2sFTOH	6:2 FTOH-C13	13.095	11159	33551	0.3326	0.8805	ng
6:2 FTOH	6:2 FTOH-C13	13.121	23047	33551	0.6869	0.8909	ng
8:2 FTOH-C13	6:2 FTOH-C13	14.324	9733	33551	0.2901	0.9387	ng
8:2 FTOH	6:2 FTOH-C13	14.325	6713	33551	0.2001	0.8901	ng
10:2 FTOH	6:2 FTOH-C13	15.400	2449	33551	0.0730	0.9710	ng
12:2 FTOH	6:2 FTOH-C13	16.376	8073	33551	0.2406	0.8445	ng
NMeFOSA	6:2 FTOH-C13	18.578	6001	33551	0.1789	0.9967	ng
NEtFOSA	6:2 FTOH-C13	18.839	25540	33551	0.7612	0.9479	ng

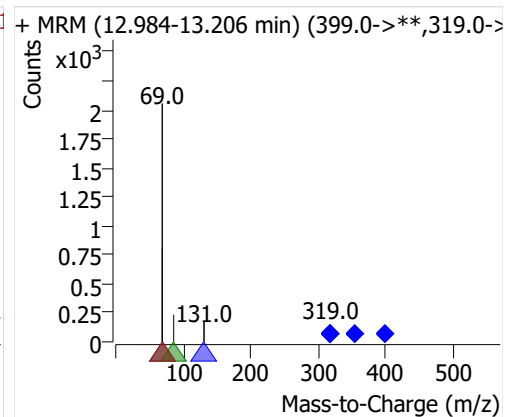
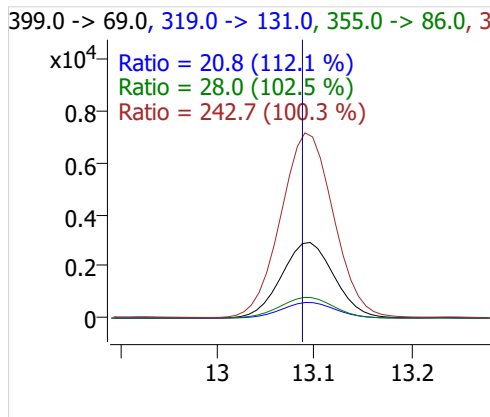
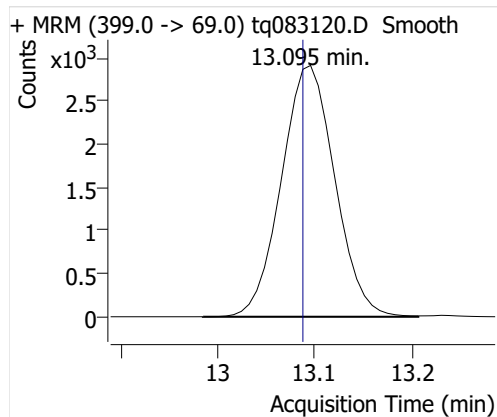
4:2 FTOH



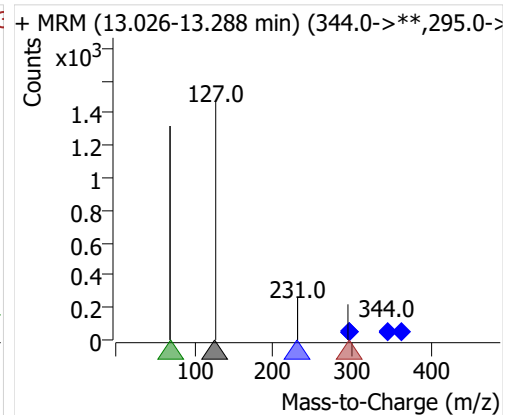
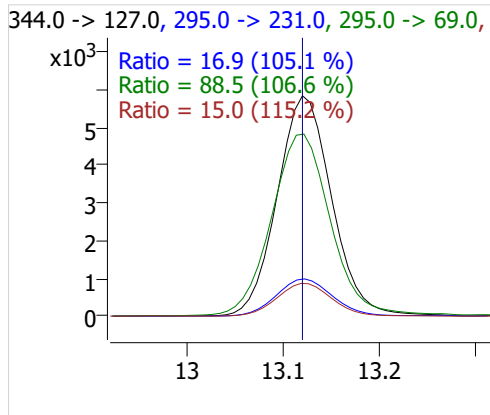
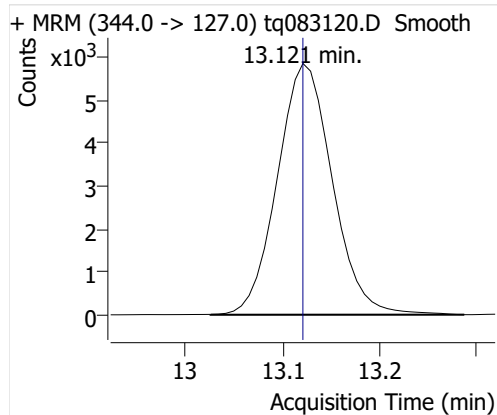
5:2sFTOH



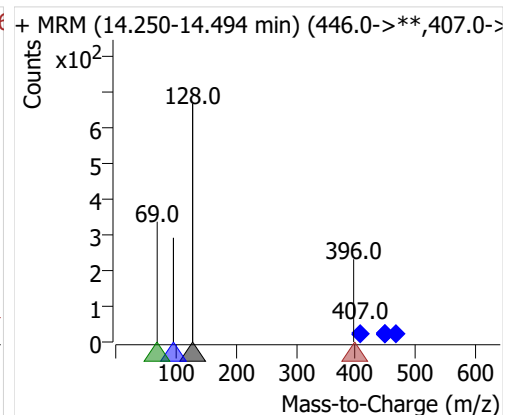
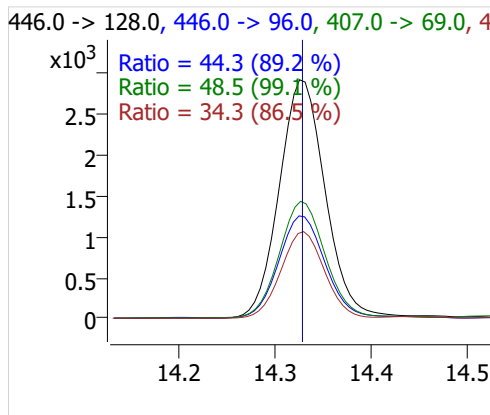
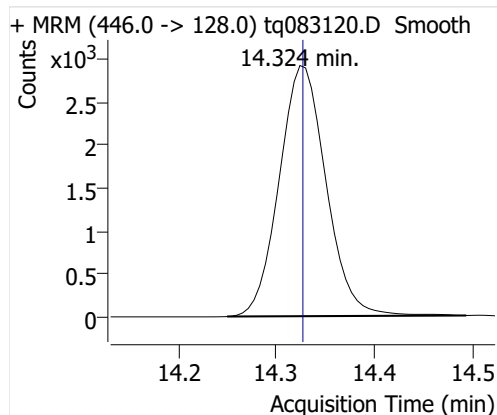
7:2sFTOH



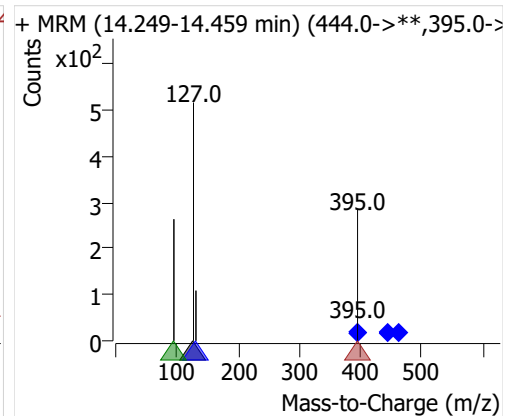
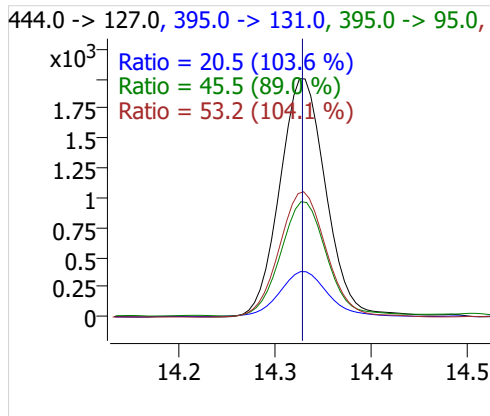
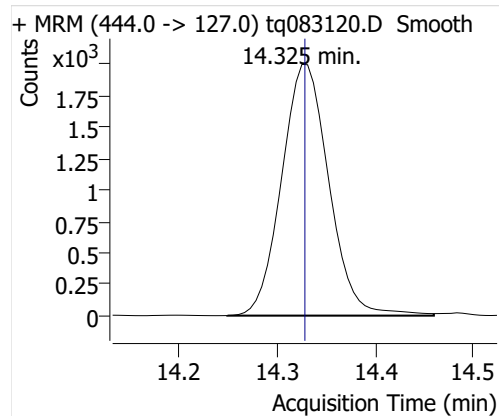
6:2 FTOH



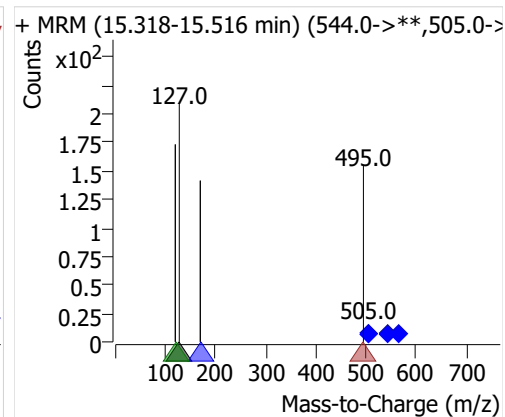
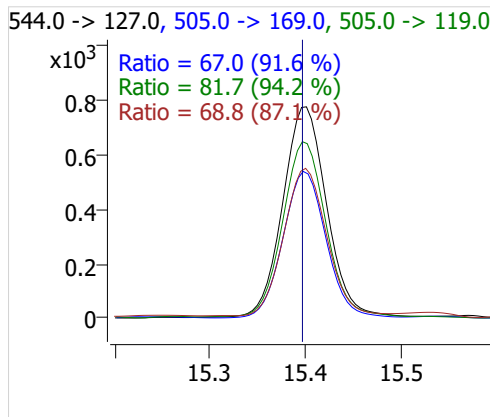
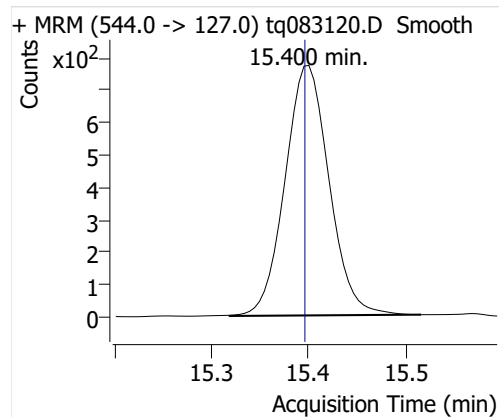
8:2 FTOH-C13



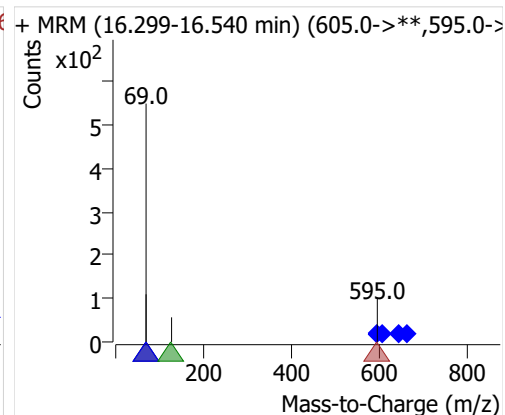
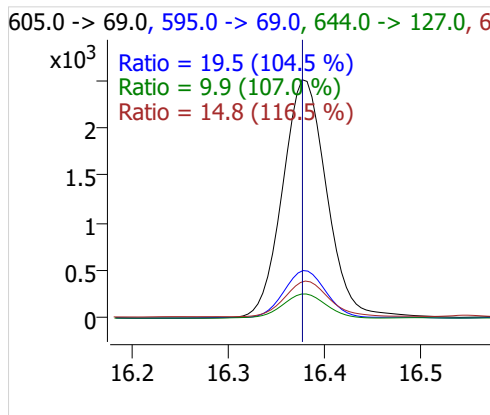
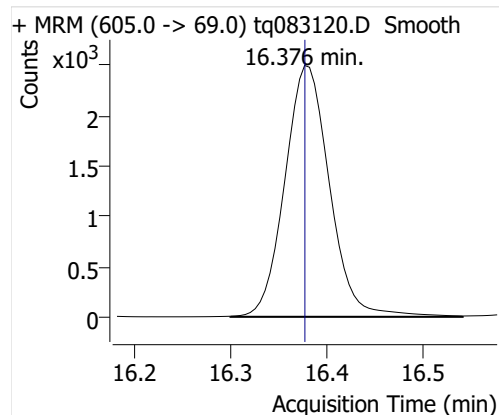
8:2 FTOH



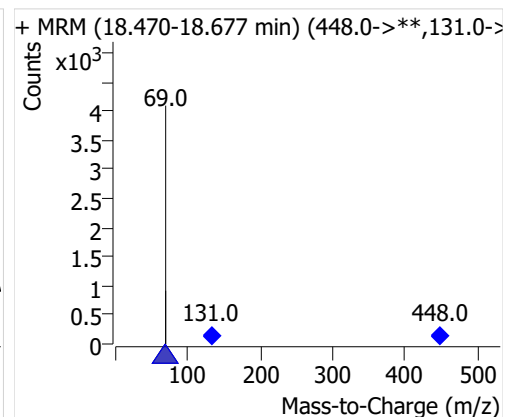
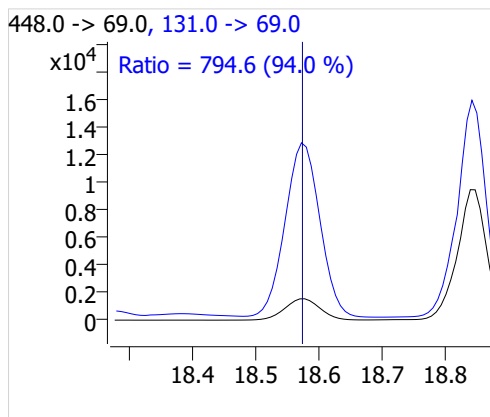
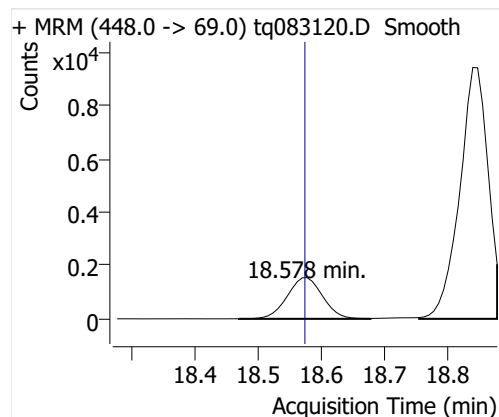
10:2 FTOH



12:2 FTOH



NMeFOSA



NETFOSA

